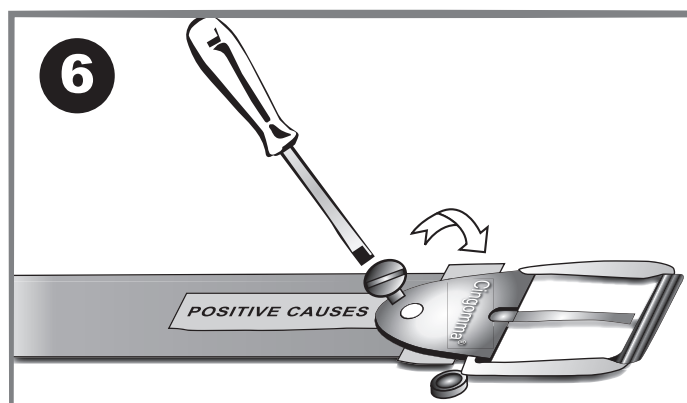
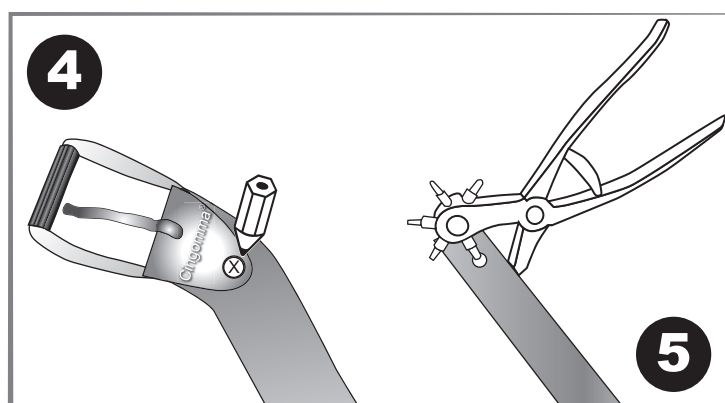
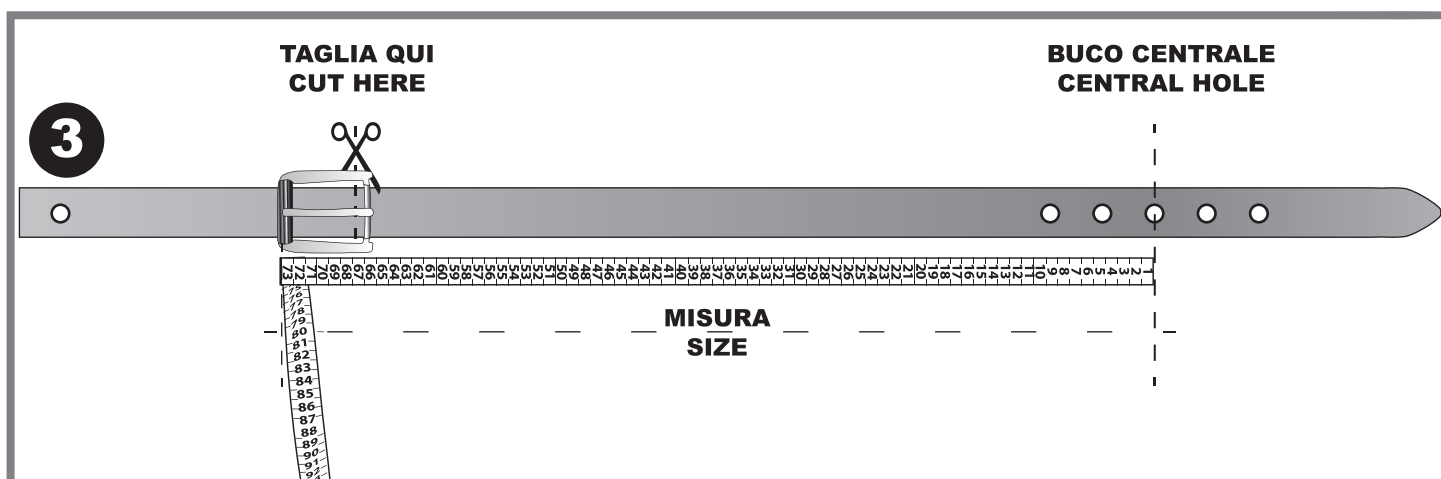
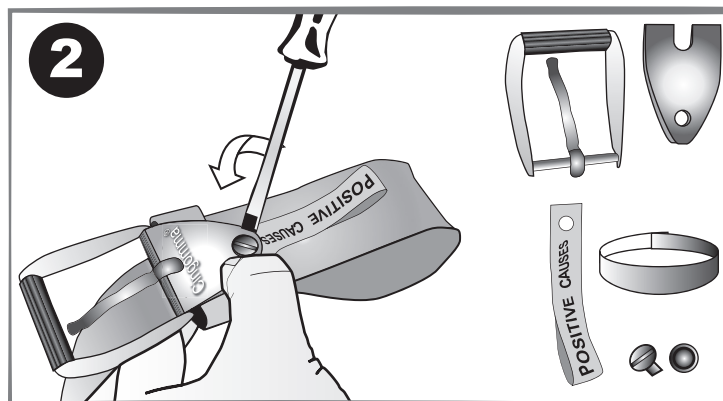
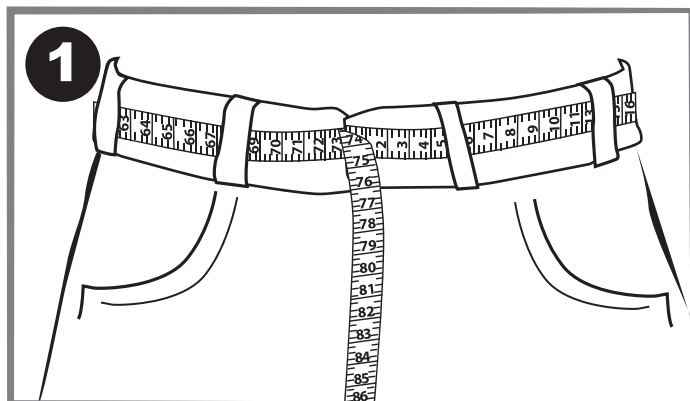


COME ACCORCIARE LA CINTURA
HOW TO SHORTEN THE BELT



1. Prendere la misura della vita a livello dei passanti dei pantaloni.
2. Svitare la vite.
3. Riportare la misura sulla cintura, dal buco centrale all'estremità della fibbia. Segnare il punto dove tagliare.
4. Segnare il punto dove fare il nuovo buco per la vite, dopo aver messo in posizione fibbia e attacco.
5. Fare il buco per la vite.
6. Rimontare il passante e la fibbia con attacco, inserire la vite e posizionare l'etichetta. Riavvitare la vite.

1. Take the measure of life at the level of loops of your trouser.
2. Unscrew the screw.
3. Return the measure on the belt, from the central hole to the end of the buckle. Mark the point where to cut.
4. Mark the point where making the new hole for the screw, having put in position buckle and connection.
5. Make the hole for the screw.
6. Refit the belt loop with buckle and connection, insert the screw and place the label. Screw the screw.